

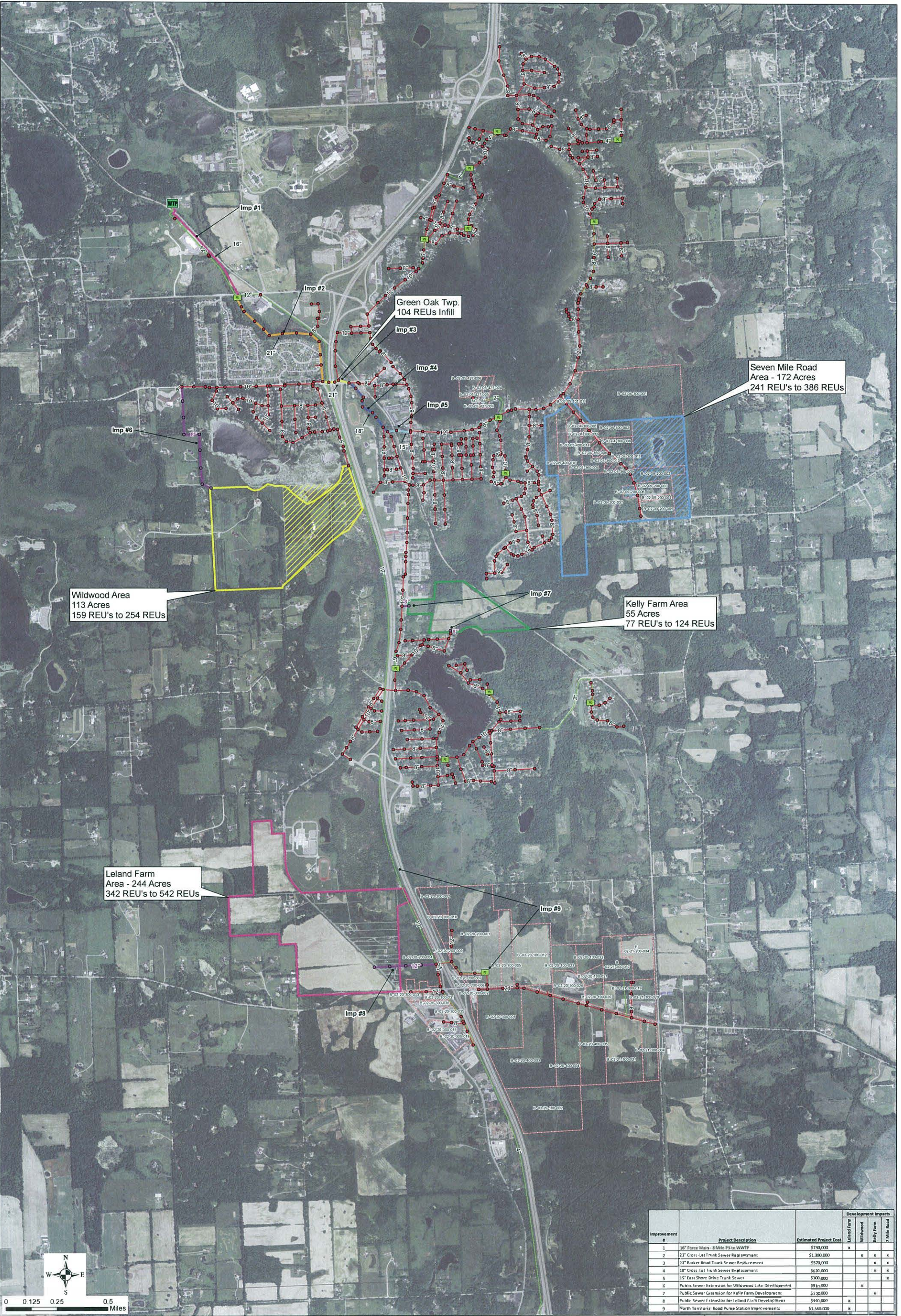
**Figure 1 - Potential MDR Developments and Available Sewer Capacity Prior to Potential Development**

Note: Available capacity is approximate and flow monitoring should be conducted prior to finalizing decisions.

**Northfield  
Township**

Tuesday, March 22, 2016





Improvement #	Project Description	Estimated Project Cost	Development Impacts		
			Leland Farm	Wildwood	7 Mile Road
1	16" Force Main - 8 Mile PS to WWTTP	\$730,000	x		
2	21" Cross-Lat Trunk Sewer Replacement	\$1,380,000		x	x
3	21" Barker Road Trunk Sewer Replacement	\$570,000			x
4	18" Cross-Lat Trunk Sewer Replacement	\$620,000		x	x
5	15" East Shore Drive Trunk Sewer	\$300,000			x
6	Public Sewer Extension for Wildwood Lake Development	\$510,000		x	
7	Public Sewer Extension for Kelly Farm Development	\$230,000			x
8	Public Sewer Extension for Leland Farm Development	\$480,000	x		
9	North Territorial Road Pump Station Improvements	\$1,500,000	x		

Figure 2 - Potential Sewer Upgrades for Development

Note: Available capacity is approximate and flow monitoring should be conducted prior to finalizing decisions.

Northfield Township

Tuesday, March 22, 2016